

helloworld  
TRAVEL  
HOSTED JOURNEYS

# HIGHLIGHTS OF JAPAN

## OSAKA TO TOKYO

21 DAYS | DEPARTING 30 MARCH 2026

SMALL GROUP HOSTED JOURNEYS





## HOSTED JOURNEYS

*Welcome to a new way of travelling*

Hosted Journeys are experts in offering travellers unique, hand- picked holidays to destinations all over the world. Our itineraries are designed to ensure you have a hassle free and seamless holiday experience. With over 35 years experience in group travel, you can rest assured you are in expert hands from start to finish.

A professional Tour Host travels with the group, taking care of all the details. They provide security and peace-of-mind, maintain positive group morale, provide assistance through airports, assist with travel disruptions or alterations, reconfirm touring and transfers, all to maximise your holiday experience.

We are driven to help you create lifelong memories and friends that share a passion for travel, food, history, culture and adventure by providing unique itineraries that maximise your travel experience and minimise the hassles.

Let us take you to remote regions of our great country, all seven continents and more importantly, places you didn't know existed.

*Annabel Dolphin*

Annabel Dolphin  
General Manager



King Penguins, South Georgia



Arches National Park, Utah



Parc Güell, Barcelona







# HOSTED JOURNEYS

## What sets us apart

### EXCLUSIVE ITINERARIES



On every Hosted Journey, experience locally-inspired moments crafted by our expert team of journey planners. You might explore a local food market by foot, exclusive behind the scenes admission to key attractions, or perhaps a refreshing cocktail in an extraordinary location against a breathtaking sunset. Each of these elements and encounters will broaden the mind and result in unforgettable experiences in each destination.

### PEACE OF MIND



Your well-being and safety is always our first priority. Working with expert operators with long-established relationships in every region allows us to keep our finger on the pulse of local dynamics and to manage your safety and security.

### SMALLER GROUPS



Hosted Journeys specialise in small group travel, meaning you travel in a like-minded group at a pace that suits you all. It also means more one on one interaction with your Tour Host, Tour Director and expert Local Guides, getting to know them for the insightful, dedicated travelling companions they are.

### CULTURAL EXPERIENCES



Our itineraries provide you with an immersive taste of the regions you visit. Hosted Journeys is delighted to share with you many interesting cultures across the world. Expand your horizons and explore the local way of life as we discover authentic cultures that will be sure to make your holiday experience truly special.

### UNIQUE STAYS



At Hosted Journeys, when considering your accommodation, our expert journey planners look at more than just the rooms. Wherever possible, they arrange to stay close to the places you most dream of seeing, close to the people you'll most enjoy meeting and close to the experiences you'll most enjoy discovering. In select locations, enjoy special feature stays with iconic hotels remarkable for their location, character and heritage.

### TOUR HOST



A professional Tour Host travels with each group, taking care of all the details. They provide security and peace-of-mind, maintain positive group morale, provide assistance through airports, assist with any disruptions to your journey, reconfirm touring and transfers, all to maximise your holiday experience.

### INCLUDED SERVICES



Let us take the strain off your wallet while you are away by making sure you won't need to think about the usual sundry costs of touring, entrance fees, taxes and gratuities. Touring options as per the itinerary are included in the price of the journey, meaning you can focus on the experience, not the expense.

### DINING EXPERIENCES



An authentic taste of a local cuisine is always among the highlights of any holiday. At Hosted Journeys, we ensure you enjoy the perfect mix of planned group meals including celebratory welcome and farewell dinners. You'll experience favourite local restaurants, on select journeys participate in hands-on cooking demonstrations and you may even get to dine with a local family in their home.











白土  
小路  
西  
空





Tokyo Temple

## RELAX KNOWING YOU'RE IN EXPERIENCED HANDS

Your host will travel with you, taking care of the day-to-day arrangements until the end of each journey. Our hosts are selected for their extensive travel experience and because they have a passion for sharing their wisdom and knowledge. Your host will ensure everything goes to plan, liaising with English-speaking local guides, hotels and dining venues to ensure each itinerary runs smoothly. They also are there to take care of all tipping.

Our hosts will bring an extra dimension to your travel experience; our hosts have been leading guests all over the globe to more than 80 countries across all 7 continents for 35 years.

Georgia has been in the travel industry for over 3 years. Her passion for travel started at a very young age and she loves being able to share this passion with her valued clients. Georgia has enjoyed visiting countries all across the world and her favourite destinations include Canada, Italy & Thailand. One of her most memorable travel experiences was snowshoeing in Banff and making maple taffy in the Snow.

"I love discovering the history of each destination i visit and I am excited to host you as we dive into the history & culture of Japan. Join me on this in-depth itinerary taking in all of the highlights the land of the rising sun"..

Georgia Walk, Travel Advisor  
Helloworld Travel Mt Pleasant



Georgia Walk



# IT'S ALL ABOUT THE EXPERIENCE

## *Japan at a glance*

From neon cityscapes to peaceful gardens, ornate castles to sacred temples, this unforgettable hosted journey offers a deep dive into the heart of Japan's rich culture and natural beauty. Starting in the vibrant city of Osaka, we experience the fusion of tradition and modern life, with highlights including Nara's giant bronze Buddha, serene Meiji-era gardens, and Osaka Castle.

Travelling by coach and bullet train, we make our way to Himeji to admire its fairytale-like White Heron Castle and tranquil Koko-en Garden before continuing to Hiroshima, where powerful visits to the Peace Memorial Museum and Miyajima's floating shrine bring history vividly to life.

In Kyoto, immerse yourself in Japan's spiritual soul. Walk through thousands of torii gates at Fushimi Inari Shrine, sip matcha during a traditional tea ceremony, and explore bamboo groves, golden temples, and geisha districts. Then it's on to Kanazawa, where the elegance of Kenrokuen Garden and the charm of samurai and geisha heritage await.

We continue to the Japanese Alps, visiting the storybook villages of Shirakawa-go, Takayama's historic streets and festival float museum, and the snow monkeys of Jigokudani. Enjoy hands-on cultural experiences including washi paper-making and miso tasting, and admire the original black tower of Matsumoto Castle.

As we journey to Mount Fuji and Hakone, admire mountain views and ride cable cars and pirate ships across crater lakes. In Tokyo, old meets new as we visit ancient shrines, dazzling shopping streets, serene gardens, and iconic sights like Shibuya Crossing and the Tokyo Skytree.

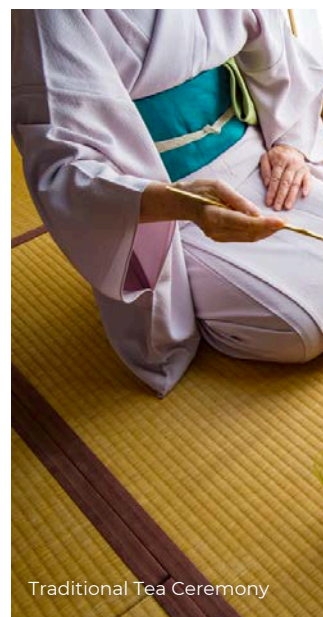
Throughout this immersive tour, enjoy carefully selected accommodation, regional cuisine, expert commentary, and cultural insight. With a professional Tour Host accompanying you every step of the way, this is the perfect way to experience the beauty, flavours, and spirit of Japan.



The Bronze Buddha

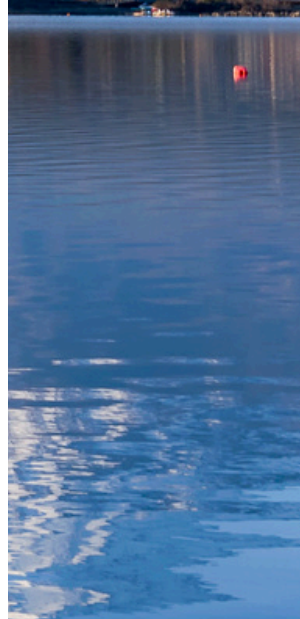


White Heron Castle



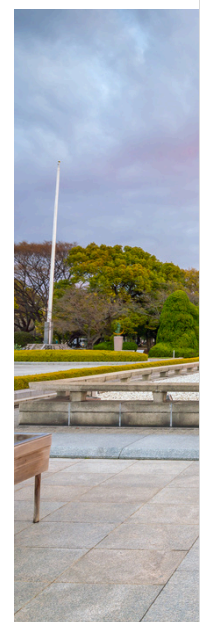
Traditional Tea Ceremony





Mount Fuji







# Hosted Journey HIGHLIGHTS OF JAPAN

The “Land of the Rising Sun” has always captured the imagination of travellers, from the iconic image of Mt. Fuji rising up from the horizon to the quiet beauty of a garden tea ceremony. Ancient history is woven into the ultra-modern culture of Japan, with hundred-year-old Shinto shrines right next door to sleek modern buildings. What could be a culture clash ends up a beautiful harmony, showcasing where Japan has been, and where it is headed.

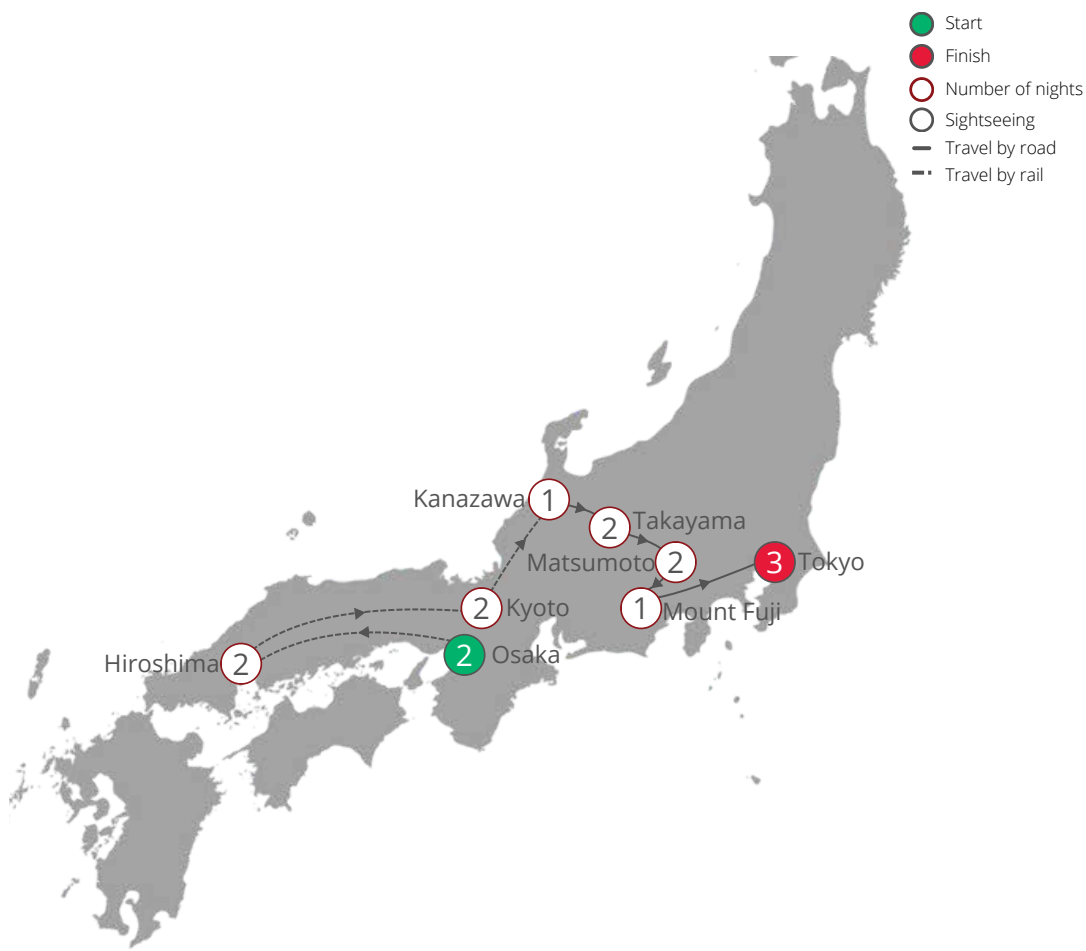
TRIP SCALE    Leisurely ☐ ☒ ☐ ☐ ☐ On the Go

## TOUR HIGHLIGHTS

- Explore iconic castles and temples including Osaka Castle, Himeji Castle, Kinkakuji (Golden Pavilion), and Kiyomizu Temple in Kyoto.
- Visit Nara’s Todaiji Temple and Nara Park, home to the Great Buddha and friendly roaming deer.
- Experience Japan’s famous bullet trains as you travel between major cities including Osaka, Kyoto, Hiroshima, and Kanazawa.
- Discover Hiroshima’s moving history at the Peace Memorial Park, A-Bomb Dome, and Miyajima’s floating torii gate.
- Take part in a traditional tea ceremony with a tea master in Kyoto and stroll the preserved geisha district of Gion.
- Wander through stunning gardens such as Isui-en in Nara, Kenrokuen in Kanazawa, and Hamarikyu in Tokyo.
- Step back in time with visits to Kanazawa’s samurai houses, Takayama’s old town, and the Edo-era Kusabe Folk Crafts Museum.
- Explore UNESCO-listed villages of Shirakawa-go and Gokayama with their distinctive thatched-roof houses.
- Visit the snow monkeys at Jigokudani Monkey Park near Nagano, where the macaques bathe in hot springs.
- Enjoy immersive cultural experiences like washi paper making, miso brewery tour, and a visit to a wasabi farm.
- Cruise Lake Ashi and ride the Hakone Ropeway over volcanic landscapes near Mt. Fuji, with views of the iconic peak.
- Take in the energy of Tokyo with visits to Senso-ji Temple, Shibuya Crossing, Meiji Shrine, and Tokyo Skytree.



Hiroshima Peace Memorial







Dotonbori, Osaka



Osaka Castle

### Day 1. Monday 30 March 2026

#### HOME PORT – INTERNATIONAL FLIGHT

Let's begin our journey as we depart our home port and board flight to Osaka. Our Tour Host will travel from Mackay and meet us either at Mackay Airport or in transit.

### Day 2. Tuesday 31 March 2026

#### ARRIVE OSAKA | D

Welcome to Japan! On arrival we will be met by our tour operator and transferred to our accommodation. Tonight, we will enjoy a special welcome dinner before settling into our accommodation in the heart of Osaka.

### Day 3. Wednesday 1 April 2026

#### OSAKA | B

After breakfast we will transfer by coach to Japan's former imperial capital Nara and Visit Todaiji Temple, the landmark of Nara that was built in the 8th century to serve as the head Buddhist temple in Japan. The most notable part of the temple is the Daibutsu-den, the largest wooden building in the world where you can find a 15-meter tall bronze Buddha. You will also see a number of deer strolling outside the temple or in the nearby Nara Park.

Afterwards we will visit Isui-en, a Japanese garden which has been preserved since its creation in the Meiji era, and is the only walking garden in Nara.

This afternoon we return to Osaka to visit Dotonbori, a restaurant mecca which has long-been referred to as Osaka's former entertainment and pleasure district. A short walk from this street leads to the touristy Ebisubashi with the famous billboard of the Glico Running Man and a view of Dotonbori River.

Next we visit Osaka Castle, a Japanese castle in Chūō-ku, Osaka. The castle is one of Japan's most famous landmarks and it played a major role in the unification of Japan during the sixteenth century of the Azuchi-Momoyama period.

### Day 4. Thursday 2 April 2026

#### OSAKA – HIROSHIMA | B L D

This morning we will visit Himeji Castle, also known as White Heron Castle (Shirasagijo) due to its elegant, white appearance, is widely considered as Japan's most spectacular castle for its imposing size and beauty and its well preserved, complex castle grounds. The castle is both a national treasure and a world heritage site. We will also visit Koko-en Garden, the famous Japanese style garden next to Himeji castle. It was opened in 1992 on the former site of the feudal lord's west residence, Nishi-Oyashiki. Among the gardens are the garden of the lord's residence which features a pond with a waterfall, a tea garden where visitors can enjoy green tea, a pine tree garden, a bamboo garden and a flower garden. We will enjoy a lunch at a local restaurant.

After lunch we will travel by bullet train to Hiroshima where we will enjoy dinner at a local restaurant.

### Day 5. Friday 3 April 2026

#### HIROSHIMA | B D

We depart this morning for a day tour in Hiroshima. We will take the ferry to Miyajima Station to Miyajima Island where we will see Itsukushima Shrine and its torii gate which are unique for being built over water, seemingly floating in the sea during high tide.

Afterwards we will make our way to Hiroshima Peace Memorial Park and pass by Genbaku Dome (A-Bomb Dome), the ruins of the former Industrial Hall of Hiroshima. Before the bomb, the area of what is now the Peace Park was the political and commercial heart of the city. For this reason, it was chosen as the pilot's target. We will also visit Peace Memorial Museum. Consisting of two sections, the East Wing shows the history of Hiroshima before the bombing, the lives of the people during WWII, and the efforts of Japan to promote international peace. The West Wing, on the other hand, exhibits a more moving collection of articles, from the personal belongings left by the victims.

This evening we will enjoy dinner at the hotel.





Togetsukyo Bridge

## Day 6. Saturday 4 April 2026

### HIROSHIMA - KYOTO | B

After breakfast we will travel by bullet train to Kyoto. On arrival at Kyoto station we will make our way to Kinkakuji Temple, a zen temple in northern Kyoto whose top two floors are completely covered in gold leaf. Formally known as Rokuonji, the temple was the retirement villa of the shogun Ashikaga Yoshimitsu, and according to his will it became a Zen temple of the Rinzaï sect after his death in 1408. The most captivating spot inside the temple grounds is the landscaped garden Sagano Bamboo Forest Arashiyama, that features a pond surrounded by rocks and pine trees.

We will also take some time to admire the Togetsukyo Bridge, a 155-meter bridge built across the Katsura River, which flows leisurely through Saga Arashiyama, a well-known place of scenic beauty in the western hills of Kyoto. The artistic form of the bridge embodies the aesthetic sense that is at the heart of Japan's artistic tradition.

## Day 7. Sunday 5 April 2026

### KYOTO | B L

Our full day tour today will see us visit the Fushimi Inari Shrine. This shrine has been marked as the most visited shrine among foreign visitors in past years. The shrine's significant Red Torii Gate which is seen in the film "Memoirs of a Geisha" fascinates millions of visitors.

Next witness the rituals involved in the preparation and pouring of matcha tea in a traditional tea ceremony at a private temple with Master tea. During the ceremony, join the teacher in making tea, following the motions as he demonstrates. Once ready, sample some traditional confectioneries before sipping the tea to counter its bitter flavour. We will then enjoy lunch at a local restaurant.

This afternoon we will take a visit to one of Kyoto's delightful temples – the 17th-century Buddhist Kiyomizu. Kiyomizudera is best known for its wooden stage that juts out from its main hall, 13 meters above the hillside. In 1994, the temple was added to the list of UNESCO world heritage sites.

Take some time to explore some places in Higashiyama district (Ninezaka sannenzaka), along the lower slopes of Kyoto eastern mountains is one of the city's best preserved historic districts. We can even take a stroll to Gion District, it is known as The "geisha district" because it is one of the city's hanamachi where geisha live and work.

## Day 8. Monday 6 April 2026

### KYOTO - KANAZAWA | B D

Today we will take the bullet train to Kanazawa. On arrival at Kanazawa station, we transfer by private coach to Higashichaya district, one of the three, well-preserved chaya districts in Kanazawa. A cha-ya, which means 'tea house' in Japanese, where geisha used to entertain her guests with a song or a dance.

This afternoon we will transfer to Kenrokuen Garden, which is ranked as one of Japan's top three gardens. The garden is home to the oldest water fountain in the country, a couple of teahouses, and a large villa that used to be the retirement home of one of the richest clans in Kanazawa.

This afternoon we will make our way across town to the old Samurai district of Kanazawa and visit Nomura Samurai House, a restored residence of a high-ranked samurai family. \*After visiting this place, take the private coach and move towards the hotel in Kanazawa.

Dinner at the hotel or local restaurant (walking distance from the hotel).

## Day 9. Tuesday 7 April 2026

### KANAZAWA - TAKAYAMA | B D

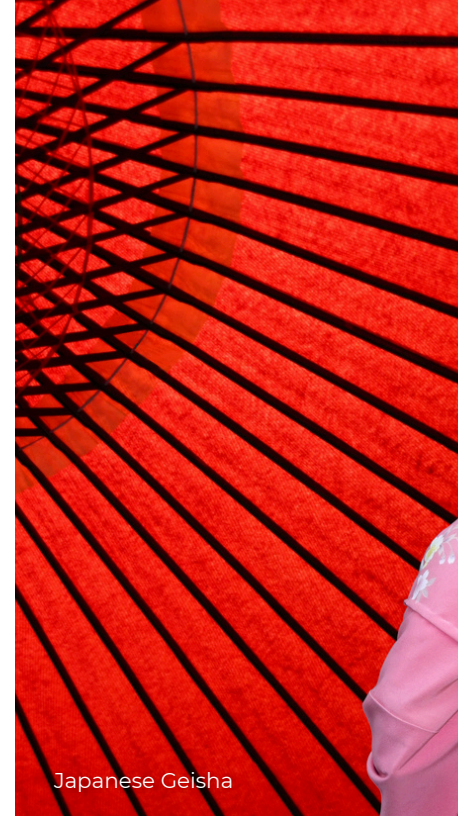
Today we will travel by private coach to Omicho market has been Kanazawa's largest fresh food market since the Edo Period. We will then transfer to Gokayama for Washi Paper making experience.

Afterwards we will visit the Historic Villages of Shirakawa-go and neighboring Gokayama regions line the Shogawa River Valley in the remote mountains that span from Gifu to Toyama Prefectures. Declared a UNESCO world heritage site in 1995, they are famous for their traditional gassho-zukuri





Snow Monkey



Japanese Geisha

farmhouses, some of which are more than 250 years old. At the end of the tour, we will transfer to Takayama by private coach and enjoy dinner at a local restaurant.

#### Day 10. Wednesday 8 April 2026

##### TAKAYAMA | B D

After breakfast we will make our way to Miyagawa morning market and sample some of the region's fruit and vegetables. We will also visit Takayama Historic Old Town. The southern half of the old town, especially the Sannomachi Street, survives in a particularly pretty state with many old homes, shops, cafes and sake breweries,

We will then visit Takayama Festival Floats Exhibition Hall, The splendid yatai\* floats of Takayama are only on show during the Takayama Festival, which is held twice yearly, in spring and autumn. We also visit Kusabe Folk Crafts Museum, a former house for a wealthy merchant named Kusakabe. The house is typical of the style during the Edo Period, with dark wooden beams and pillars.

Tonight we will enjoy dinner at the hotel.

#### Day 11. Thursday 9 April 2026

##### TAKAYAMA – NAGANO – MATSUMOTO | B

We will depart Takayama this morning and make our way to Nagano. Our first stop is at the 7th-century Zenkoji Temple, one of Japan's most important Buddhist temples. Lunch at your own arrangements. Then travel deeper into the Japanese Alps to Yudanaka in search for the snow monkeys (Japanese Macques) at Jigokudani Yaen-Koen Monkey Park. Accustomed to humans, the monkeys can be observed up-close, and they almost completely ignore their human guests.

#### Day 12. Friday 10 April 2026

##### MATSUMOTO | B L

This morning we will visit Daio Wasabi Farm in rural Azumino City near Matsumoto is one of Japan's largest wasabi farms and a popular tourist destination. The farm has multiple large fields with a meticulously maintained network of small streams that constantly provides each wasabi plant with clear, flowing water from the Northern Alps.

Afterwards we will visit the Ishii Miso Brewery, it was founded in 1868 (the end of the Edo era) and is still producing miso by a unique traditional natural method.

This afternoon we will visit the stunning Matsumoto Castle, one of the only twelve remaining original castles in Japan. It was built on a plain rather than on a hill or a mountain that is quite typical for most castles. Matsumoto Castle is known for its black exterior, its red arch bridge, and the picturesque Japanese Alps in the background.

#### Day 13. Saturday 11 April 2026

##### MATSUMOTO – MOUNT FUJI | B L D

Today, travel through the foothills of the iconic Mount Fuji, enroute we will enjoy lunch at local restaurant. This afternoon we will visit Kubota Itchiku Museum. The art museum established by Itchiku Kubota, who was the original creator of dyeing textile called, "Itchiku-Tsujigahana" in which a small bunch of cloth is tied with string before dying to make the patterns. Discover some of his signature kimonos hanging on wooden bars, reflecting the natural light that comes from the sun. Even the museum itself can be considered great artwork, with some of its pillars made from century old cypress trees and its ceiling open so that the visitors can clearly see its wooden structure.

Tonight we enjoy dinner at the hotel.

#### Day 14. Sunday 12 April 2026

##### MOUNT FUJI – HAKONE – TOKYO | B D

As we bid farewell to Mount Fuji we will make our way by private coach to Hakone, a popular hot spring destination. First ride the replica pirate ship that cruises along Ashinoko, a body of water that was formed after a volcanic eruption that occurred more than 3,000 years ago. Then ride the Guinness World Record-holder ropeway up to Mt. Owakudani, passing over sulfurous fumes and hot springs. Owakudani, a renowned viewpoint in Hakone, offers an up-close encounter with intense volcanic activity. Formed nearly 3000 years ago by a phreatic eruption and pyroclastic flow, it was once known as Jigokudani (Hell Valley) due to its sulfurous aroma.





Imperial Palace Tokyo

A local delicacy, the "black eggs," gets its distinctive hue from a chemical reaction with geothermal energy and volcanic gas. Accessible via the ropeway, this unique site offers stunning views of Hakone and majestic Mt. Fuji along the journey.

After the cruise, we will take the private coach to our hotel in Tokyo for dinner at the hotel.

#### Day 15. Monday 13 April 2026

##### TOKYO | B

After breakfast we will embark on our Full-day tour in Tokyo. Stroll through the vibrant Asakusa district is the city's oldest Geisha district and also the home to Senso-ji, Tokyo's oldest Buddhist temple. The streets around Senso-ji feature many traditional shops that sell Japanese crafts and souvenirs and are a delight to wander through, and Nakamise Street connects the main gate of Senso-ji temple (Kaminarimon gate) and the main hall. Ascend to the observation deck of the 634-metre Skytree.

We will then visit Meiji Jingu Shrine, Tokyo's most famous Shinto shrine is dedicated to the spirit of the late Emperor Meiji. The park that surrounds the shrine has around 120,000 trees, making you forget that just outside the shrine grounds are two of the city's popular shopping districts, Harajuku and Omotesando.

We will then visit Shibuya Crossing. The intersection is a popular location for movies and media taking place in Tokyo. It has appeared in the films *Lost in Translation* and *The Fast and the Furious: Tokyo Drift*, while making appearances in numerous music videos, newscasts, and animated programs. It is a popular nightlife spot filled with bars, clubs and izakaya, and weekend revelry is a common sight. It is also a trendy shopping district.

#### Day 16. Tuesday 14 April 2026

##### TOKYO | B D

Today we round out all that Tokyo has to offer as we visit the Imperial Palace East Gardens, part of the Imperial Palace, the main residence of the Emperor of Japan and the former site of Edo Castle.

Afterwards we will make our way to the Hamarikyu Garden, a sprawling and picturesque landscape garden in the heart of Tokyo. Located next to Tokyo Bay, it includes seawater ponds that fluctuate with the tides and a teahouse on an island, providing a serene spot for visitors to enjoy the view. The garden's traditional design creates a stunning contrast against the modern skyscrapers of the nearby Shiodome district.

Tonight we will take the time to reminisce on our amazing adventure across Japan at a special farewell dinner.

#### Day 17. Wednesday 15 April 2026

##### DEPART TOKYO | B

Today we will bid farewell to Japan as we transfer to the airport and begin our journey back to Australia.

#### Day 18. Thursday 16 April 2026

##### ARRIVE AUSTRALIA - HOME PORT

Today we arrive back in Australia and fly to our Home Port. Our Tour Host will travel to Mackay and bid you farewell enroute or on arrival in Mackay.

#### INCLUDED SERVICES

- Economy flights from Home Port to Osaka & return from Tokyo
- Private transfers throughout the itinerary
- Comfortable hotel accommodation throughout
- Sightseeing as outlined in the itinerary
- Gratuities
- Services of an experienced Hosted Journeys Tour Host
- 15 x Breakfasts (B), 4x Lunches (L), 9 x Dinners (D)

DEPARTURE CITY	Mackay	Townsville	Brisbane
Twin Share	\$15,995	\$16,195	\$15,795
Solo Traveller	\$19,495	\$19,695	\$19,295

\*Prices are per person





Shin-Osaka Esaka Tokyu Rei Hotel, Osaka

Associa Takayama



# Our Accommodation

A PLACE TO REST YOUR HEAD

## SHIN OSAKA ESAKA TOKYU HOTEL

Osaka | Japan

This hotel offers comfort and convenience near Shin-Osaka Station. With stylish rooms, modern amenities, and easy access to public transport, it's an ideal base for exploring Osaka.

## THE ROYAL PARK HOTEL

Hiroshima | Japan

This modern hotel offers guests convenient access to the city's attractions. The hotel features stylish, air-conditioned rooms equipped with free Wi-Fi, flat-screen TVs, and private bathrooms, some offering scenic views of the river.

## URBAN HOTEL KYOTO

Kyoto | Japan

This hotel is centrally located in Kyoto's Shimogyo Ward, offering easy access to cultural landmarks like Nijo Castle and Nishiki Market. Featuring 336 air-conditioned rooms, free Wi-Fi, and modern amenities.

## AMENEK HOTEL KANAZAWA

Kanazawa | Japan

This hotel is a 4-star hotel located in the vibrant Katamachi district, offering easy access to Kanazawa's cultural landmarks like Kenrokuen Garden and the 21st Century Museum of Contemporary Art.

## ASSOCIA TAKAYAMA RESORT

Takayama | Japan

This serene retreat is nestled in the Takayama Highlands, offering panoramic views of the Northern Alps. The resort features both indoor and outdoor natural hot spring baths, allowing guests to unwind and enjoy the surroundings.

## HOTEL BUENA VISA MATSUMOTO

Matsumoto | Japan

located in the heart of Matsumoto, offering convenient access to local attractions such as Matsumoto Castle and the Matsumoto City Museum of Art. The hotel features 190 elegantly designed rooms with modern amenities.

## TOMINOKO HOTEL

Mount Fuji | Japan

This property offers breathtaking views of Mount Fuji and Lake Kawaguchi. Guests enjoy traditional Japanese hospitality, relaxing hot spring baths, and a serene lakeside setting perfect for a peaceful retreat.

## SHINAGAWA PRINCE HOTEL

Tokyo | Japan

This hotel is a large, modern hotel in central Tokyo, offering convenient access to transport, comfortable rooms, and on-site attractions including restaurants, a cinema, aquarium, and shopping arcade.





# TERMS & CONDITIONS

The following terms and conditions form the basis of your contract with Helloworld Travel Hosted Journeys ('Hosted Journeys'). Please read them carefully as they set out your and our respective rights and obligations. Payment of your deposit to Hosted Journeys confirms that you have read, understand and agree with the conditions outlined below and a more detailed version on the Hosted Journeys website, [www.hostedjourneys.com.au](http://www.hostedjourneys.com.au)

## Payment Schedule, Booking & Medical Form

- **NON-REUNDABLE DEPOSITS** t of \$1,500 per person are due within 7 days of booking.
- **FINAL PAYMENT** is due by 19DEC25

Failure to make payments as per the schedule may result in your booking being cancelled and your deposit forfeited. If your reservation is made after these dates, full payment of any funds already due is required at time of booking.

You are also required to complete a Hosted Journeys Booking & Medical Form and return it to your Travel Consultant. Please also attach a copy of your photo ID or the photo page of your passport (for international travel) Bookings are subject to auto cancel after 7 days if the deposit and Booking & Medical Form is not received.

## Holiday Pricing:

The package price is per person based on twin share accommodation and subject to a minimum number of passengers booked. Should minimum numbers not be met, we reserve the right to withdraw the departure prior to final payment date and a refund of your paid deposit will be offered. Alternatively the tour will proceed as planned however the Tour Host may not travel with the group. Your holiday pricing may increase if minimum numbers are not met.

Hosted Journeys reserves the right to modify program itineraries, included sightseeing and substitute accommodations and transportation at any time due to unforeseen circumstances. In such circumstances, we will do our best to supply comparable services, accommodations and itineraries, and there shall be no refund in this situation.

## Currency Adjustment

Deposits secure your reservation but do not guarantee the final price. Due to ongoing currency fluctuations, all prices remain subject to change until final payment is received. Significant movements in the value of the Australian dollar may result in a repricing of your holiday.

## Special Requests:

Specific requests such as bedding, adjacent rooms, seat requests on flights and special meal requirements can be made on your Booking Form. Please note, Hosted Journeys will do everything they can to accommodate your requests, however, they can not be guaranteed.

## Solo Traveller | Single Accommodation:

A select number of single rooms are available on each tour. It is important to note that in certain countries a single room may mean a single bed in the room. If you are a single traveller and willing to share with another single traveller, let your Travel Consultant know. When possible, Hosted Journeys will liaise with your consultant to advise if a traveller of the same gender is also willing to share. Your consultant will facilitate contact between the single travellers prior to confirmation to ensure you are agreed compatible travellers. This cannot be guaranteed. If another single traveller is not available, the single supplement must be paid.

## Travel Insurance:

Travel Insurance is compulsory when travelling with Hosted Journeys on International Itineraries. We recommend Covermore (offered by Helloworld Travel) as, whilst you are away, our Tour Host can communicate directly with our Covermore representative and provide assistance when making claims or enquiries. If you choose an alternative insurance provider, our Tour Host cannot guarantee assistance.

"Covermore Insurance is issued by Great Lakes Australia (ARBN 127 740 532, ABN 18 964 580 576, FSL 318603). Any advice provided is general advice only. Please consider your needs, financial situation and the combined FSG/PDS available from us before deciding to buy this insurance.

## Tour Hosts:

Our Hosted Journeys are facilitated by a Helloworld Travel Tour Host. The decision of the Tour Host is final on all matters likely to affect the safety or well-being of any fellow traveller or staff member. If you fail to comply with a decision made by a Tour Host, or interfere with the well-being or mobility of the group, the Tour Host may direct you to leave the tour immediately, with no right of refund. We may also elect not to carry you on any future Hosted Journeys. You must, at all times, comply with the laws, customs, foreign exchange and drug regulations of all countries visited.

## What's not included:

Items such as (and not limited to) passports, items of a personal nature, beverages, meals and sightseeing not detailed on the itinerary, excess baggage, portage (unless specified) and travel insurance.

## Photo ID, Passport & Visas:

Your reservations must be made in exactly the same name as your photo ID or passport (for international travel). Should any amendments to names be made from those advised on the Booking Form, or if a change needs to be made as a Booking Form was not supplied, fees will apply. For International Itineraries please ensure you have a current passport that is valid for at least six months after your scheduled return home to Australia. It is the guests sole responsibility to obtain, and have available when necessary, the appropriate valid travel documents.

## Documentation:

Approximately one month prior to departure you will be sent an invitation to attend your pre-departure event where you can meet your fellow travelers and collect your travel documents. The event will be held in Mackay QLD, approximately two weeks prior to your departure. If you are not located in Mackay QLD, your travel documents will be couriered to you or your Travel Consultant.

## Social Media & Imagery:

By signing your Booking Form you consent to Hosted Journeys using images of you taken by the Tour Host during the Hosted Journey for advertising and promotional purposes in any medium we choose. You grant us a perpetual, royalty-free, worldwide, irrevocable license to use such images for publicity and promotional purposes.

## Changes & Amendment Fees:

If you extend or alter your holiday, a minimum fee of \$100 per person per change is payable to Hosted Journeys to cover administrative and communication costs. This is in addition to any fees charged by airlines and applicable suppliers.

## Refunds & Cancellation:

Cancellation must be in writing and such notice is not effective until received by Hosted Journeys. Any part payments received by Hosted Journeys over and above your deposit, including payment for airfares, will be subject to cancellation fees at the discretion of Hosted Journeys plus any third party suppliers. A 100% cancellation fee will apply if your reservation is cancelled on or after the final payment deadline.

In the event that an act of terrorism or natural disaster occurs at your chosen travel destination after your final payment has been made, but before your departure date, Hosted Journeys will perform all possible efforts to minimise your travel disruptions. However in extreme cases, your tour may be altered or cancelled for your safety. Hosted Journeys can not be held responsible should any third party suppliers be unable to offer any refunds due to such causes.

If due to unforeseen circumstances there has been a change in your reservation that results in requiring either a partial or a full refund, Hosted Journeys will work with your Travel Consultant to arrange this.

Refunds will be subject to the terms and conditions of the third party travel providers that Hosted Journeys have booked the travel arrangements with. It is important to note that third party travel providers have restrictive terms and conditions for group travel and can differ from those outlined in their brochure or on their website. Hosted Journeys cannot be held responsible for any travel providers delays in issuing refunds. Some refunds, such as airlines, are known to take at least 3 - 6 months. Similarly, any refund for a cancelled booking can only be paid to you, once the supplier provides the refund to Hosted Journeys.

Hosted Journeys take pride in providing an exclusive travel experience and often take a long time to plan and book the travel arrangements included in your chosen itinerary. Any remuneration earned by Hosted Journeys will remain non-refundable.

## Liability & Privacy:

Hosted Journeys acts as a wholesale travel provider within the Helloworld Travel Network. We sell various travel related products on behalf of numerous transportation, accommodation and other wholesale service providers, such as airlines, coach, rail and cruise line operators. Hosted Journeys' obligation is to make travel bookings on your behalf and to arrange relevant contracts between you and the travel service providers. We have no responsibility for these services nor do we make or give any warranty or representation regarding their standard. All bookings are made subject to the terms and conditions and limitations of liability imposed by these service providers groups departments. Your legal recourse is against the specific provider and not Helloworld Travel or Hosted Journeys. If, for any reason, any travel service provider is unable to provide the services for which you have contracted your remedy lies against the provider and not with Hosted Journeys.

It is important that you, and all members of your travelling party are aware of these terms and conditions as they may relate all or in part to the bookings held by Hosted Journeys on your behalf. If you are making bookings on behalf of more than one person, we will be happy to provide you with more than one copy of these terms and conditions if requested.

All reservations have been booked under the terms and conditions laid down by the airlines and tour providers groups departments. It is important to understand that each tour provider has different terms and conditions for group travel and these will differ from the Terms & Conditions for leisure travel.

We do not accept any liability of whatever nature, whether in contract, tort or otherwise, for the acts, omissions or default, whether negligent or otherwise, of third party providers over whom we have no direct control. Under circumstances where liability cannot be excluded, such liability is limited to the value of the purchased travel arrangements. We do not accept any liability in contract, tort or otherwise for any injury, damage, loss (including consequential loss), delay, additional expense or inconvenience caused directly or indirectly by force majeure or any other event which is beyond our control which is not preventable by reasonable diligence on our part. Third party excursions such as scenic flights, boat cruises, helicopter flights, cable car rides, some 4WD tours, white water rafting, camel rides, hot air ballooning, rail, rural homestay options are not operated by Hosted Journeys, nor by persons or companies associated with Hosted Journeys. These activities may involve inherent risk of injury, death, accident, delay and loss, and clients assume all such risk with regard to any misadventure, death, injury, delay or loss which occurs during, or as a result of, any such activity.

Hosted Journeys collects information about you (including health information where necessary) and may disclose your personal information to organisations which provide services to Hosted Journeys to enable us to provide products and services to you, process your travel arrangements and facilitate your participation in loyalty programs. If the information is not provided, we may not be able to fulfil the service requested. As a Hosted Journeys customer, you may, at any time, request further information about the way we manage your personal information. You may also request removal from our contact lists or correct your personal information by contacting us in writing.

## Medical & Travel Health:

Hosted Journeys seeks to provide a safe, memorable and enjoyable travel experience for all guests and welcomes guests with special needs or disabilities provided they are accompanied by an able-bodied companion and do not require special assistance from Hosted Journeys Tour Host or other travellers. You must complete a Hosted Journeys Medical, Health & Mobility Form at the time of booking and advise of any physical, medical, or other particular needs that may affect your enjoyment of the tour or its enjoyment by others; and you must ensure that you are medically and physically able to travel. Failure to do so may result in the termination of your travel arrangements without any liability on the part of Hosted Journeys. Hosted Journeys reserves the right at its discretion to exclude from a tour, or to terminate the travel arrangements during the course of the tour without refund, of anyone who: is unable to cope with the requirements of coach travel – this includes embarking and disembarking 4-6 steps that are approximately 30 centimetres high, at each stop of the coach, which, on some tours, is at least 8 times per day, may need services or facilities that are not available, fails to comply with the reasonable instructions of Hosted Journeys Tour Host, engages in illegal or undesirable behaviour or interferes with the enjoyment of or jeopardises the safety of other participants

Anyone so excluded will be required to disembark at a safe public location, transportation from which will be wholly their responsibility. You agree that Hosted Journeys is released from all liability for, and you agree not to hold Hosted Journeys responsible for, termination of your travel arrangements in accordance with the previous condition, or any decision made by Hosted Journeys or by any service provider who refuses to provide you with special accommodation facilities or services that are not available or who refuses to carry you by reason of any disability or medical condition. Any changes to health, mobility and fitness must also be reported to Hosted Journeys as soon as possible and prior to departure.

## Complaints:

If you have a complaint please inform your Tour Host or our local representative at the time so they can attempt to rectify the matter whilst travelling. If satisfaction is not reached through these means then any further complaint should be put in writing to us within 30 days of the end of the tour in order to expediate and escalate your complaint.

## Brochure Accuracy, Images & Maps within this publication:

Hosted Journeys has endeavoured to ensure that the information given in this brochure is correct to the best of its knowledge at the time of going to print. All images are used with permission and are subject to copyright from their source. Maps may not be to scale or represent 100% location accuracy for the purpose of readability. Hosted Journeys can not be responsible for changes in factual data or imagery and recommend you confirm the details of your chosen holiday package at the time of booking. Hosted Journeys will endeavour to notify you of any significant changes prior to departure.

## COVID19

For up to date information regarding our COVID safe program, please visit our website - [www.hostedjourneys.com.au/termsandconditions](http://www.hostedjourneys.com.au/termsandconditions)









Contact your local Travel Professional  
13 14 15



[www.hostedjourneys.com.au](http://www.hostedjourneys.com.au)